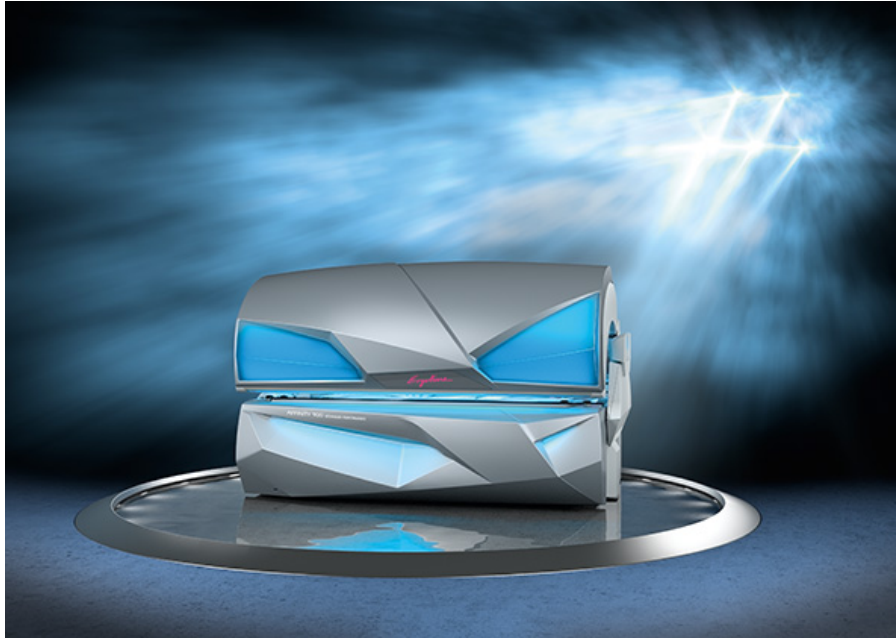


JK Products & Services, Inc

ERGOLINE AFFINITY 900

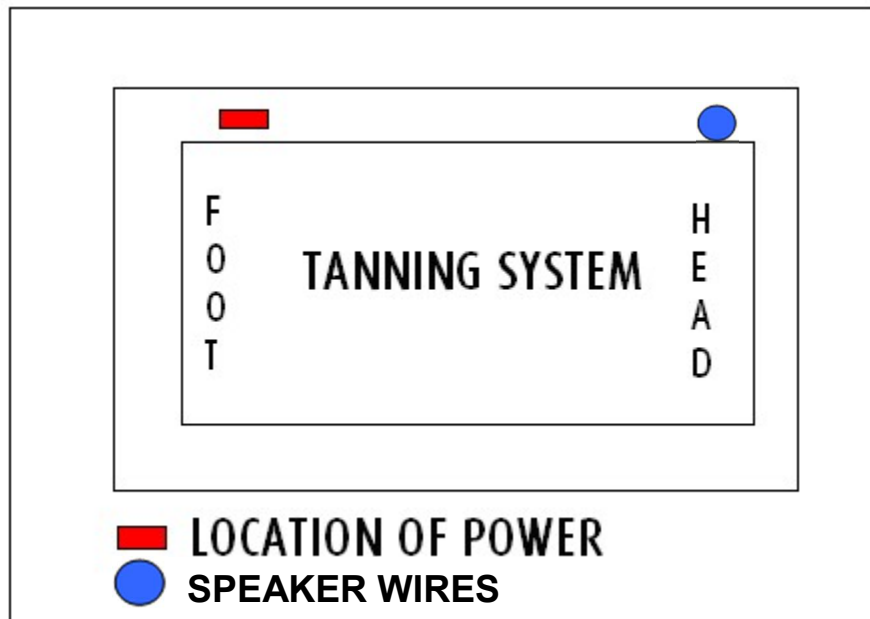


Power consumption rating	17,000 W
Rated frequency	60 Hz
Rated voltage	230 V
Rated breakers*	60 amp 3-pole or 110 amp 2-pole
Rated amp draw 3 Ø	46
Rated amp draw 1 Ø	77
Mains Power Connection*	The unit is configured from the factory for connection to 3-Phase power. A 1" liquid-tight connector is provided See note for wiring
Noise level 1m away from device	67.2 dB
Noise level inside the device	<70dB
Load on the acrylic panel	max. 330 lb
Weight	approx. 1,327 lb
Operating temperature	59-89 °F
Unit footprint**	94 1/2" X 90 9/16"
Number of body lamps	Base 18 @ 160W 71"
	Canopy 32 @ 160W 71"
Number of facial lamps	4 @ 520W
Number of shoulder tanner lamps	7 @ 25W
Spaghetti lamps	3 @ 8W

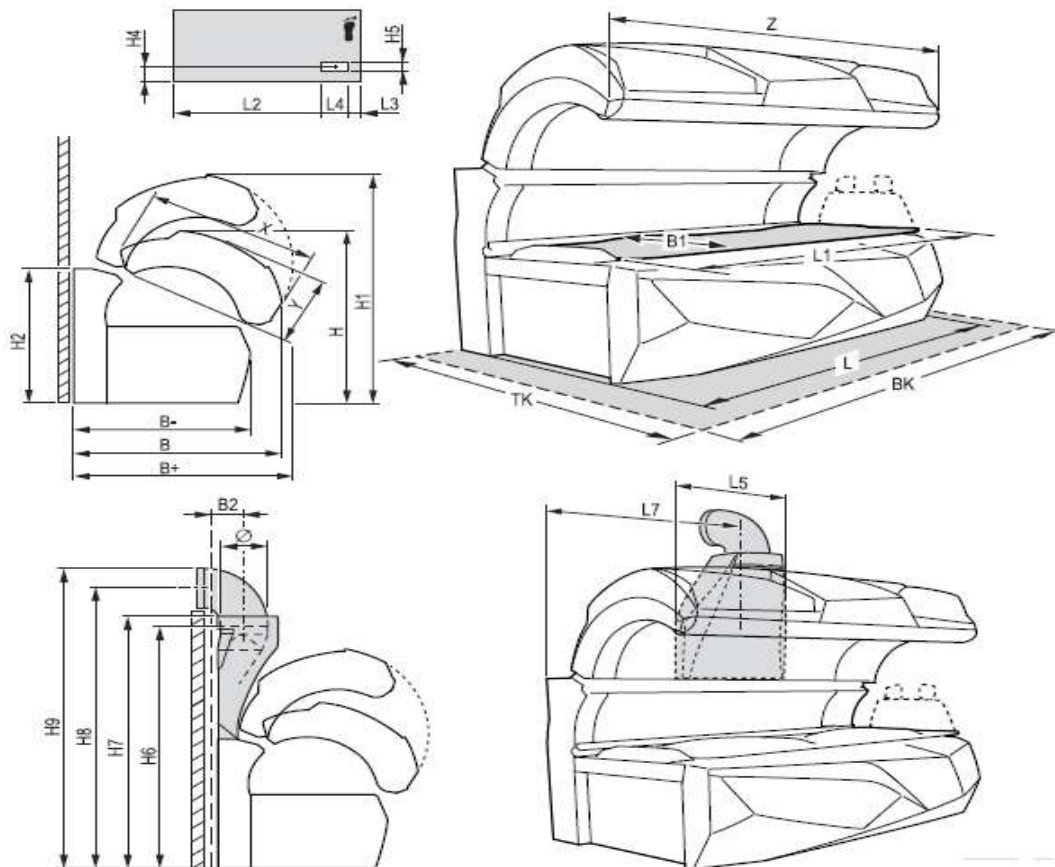
*Owner is responsible for all wiring up to the terminal block connection inside the device. As well as ensuring the wire is properly sized for the amp draw and breaker selection per the electrical code in their area.

** Minimum footprint size for proper operation and cooling of the unit. Does not account for door sizes or obstructions in the room. (Footprint measurement is not the room size)

JK Products & Services, Inc



ACTUAL DIMENSIONS



JK Products & Services, Inc

B+ = 58 4/16 IN

B = 56 5/16 IN

B- = 55 2/16 IN

B1 = 35 7/16 IN

B2 = 7 6/16 IN

L* = 92 ½ IN

L = 89 IN

L1 = 78 12/16 IN

L2 = 68 2/16 IN

L3 = 9 6/16 IN

L4 = 10 7/16 IN

L5 = 34 2/16 IN

L6 (L7) = 43 15/16 IN

H = 57 11/16 IN

H1 = 72 2/16 IN

H2 = 47 7/16 IN

H4 = 15 12/16 IN

H5 = 4 ½ IN

H6 = 74 5/16 IN

H7 = 77 11/16 IN

H8 = 86 ½ IN

X = 47 2/16 IN

Y = 22 ½ IN

Z = 89 IN

Ø = 11 13/16 IN

BK = 94 ½ IN

TK = 90 9/16 IN